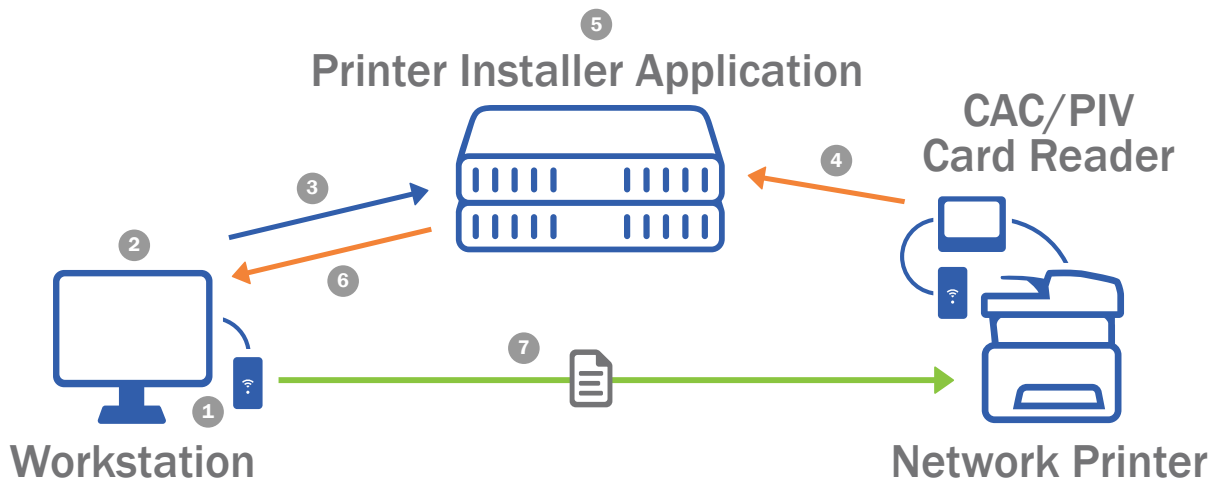


Serverless CAC/PIV Printing

Secure printing solutions for your smart card environment

- Any Make and Model Printer
- Enhance FITARA/DCOI Score
- Audit Network and Local Printing
- End-to-End Visibility
- HSPD-12 Compliant Printing
- FIPS 140-2 Compliance Pending



1. User initiates print job with card inserted in workstation card reader.
2. PIN is captured and used to digitally sign and secure the print job while at rest.
3. Print job info (metadata) is sent to the Printer Installer Application.
4. User scans card at the printer.
5. Badge info sent to the Printer Installer Application and matched to the user and print job.
6. Command to release the print job is sent to the workstation.
7. Workstation verifies print job is secure and releases job directly to the printer.

CAC/PIV Card Reader



“...we pulled the plug on our 400+ print servers. That decision has saved us millions of dollars on our printer management and provisioning.”

— U.S. Department of Homeland Security

Product Overview

PrinterLogic's enterprise print-management solutions streamline federal agency printing and dramatically reduce the time required to manage and deploy printers for your staff. Centralized management provides a global, end-to-end view of the entire printer fleet, and self-installation tools help users solve many common printer problems on their own—which keeps help-desk calls to a minimum. PrinterLogic helps lower the cost of printing in an agency environment.

Centralized Printer and Driver Management

- Effortlessly import and migrate all printers with PrinterLogic's Admin Console
- Centrally manage end-user printers, drivers, device settings and preferences
- Automatically apply all changes made by the administrator to end-user printers
- Eliminate complicated scripting and GPOs
- Deploy printers based on AD user, group, OU or IP address range
- Role-based access control for the help-desk IT workers

Secure Pull Printing

- Ensure documents are not released until the user is at the printer to pick them up
- Release print jobs to any printer authorized to receive pull-print jobs
- Utilize badge scan, release station or mobile device to release print jobs

Print Job Auditing and SNMP Monitoring

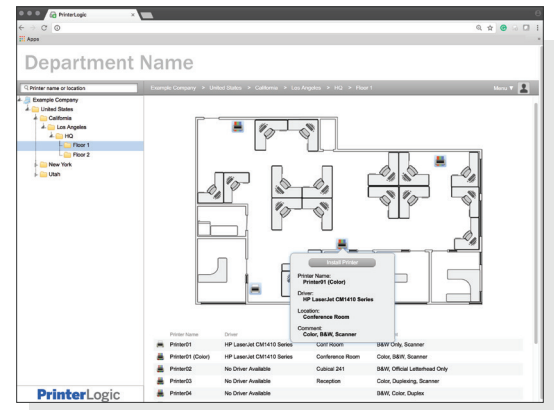
- Generate reports to proactively control costs and manage resources
- Track and audit print jobs by user, department, job title, or printer
- Tie actual cost of printing to usage data
- Monitor physical printer statuses through SNMP v3

Self-service Printer Installation Portal

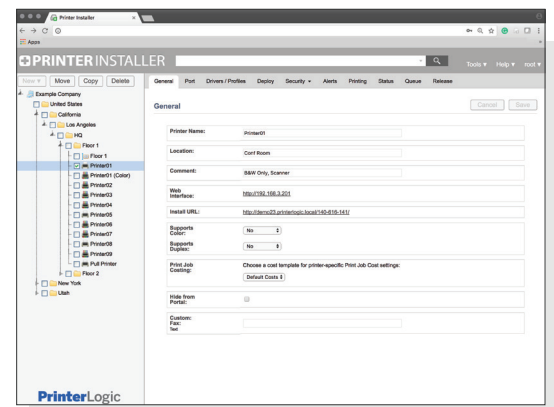
- Empower end users to install printers on their own with a single click
- Provide optional floor plan maps to help end users locate and install printers
- Significantly reduce the number of help-desk calls

Simplified Remote Session and VDI Printing Environments

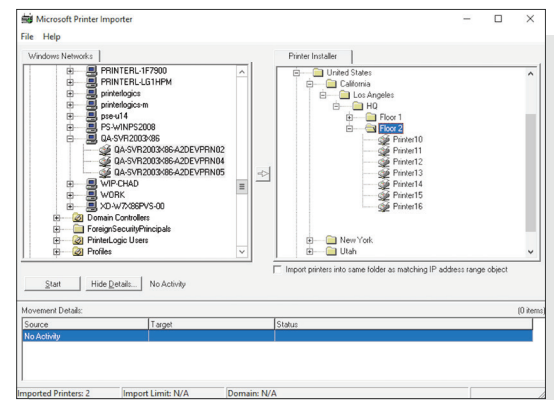
- Auto-deploy printers in-session, based on IP address of endpoint device
- Instantly create printers in the session and speed up login times
- Leverage VDI compression for print jobs across the WAN
- Share print usage and costs with department managers



Staff Self-service Portal



Printer Installer Administrator



Import Utility

PLDS_CACPIV_FVB1_070218